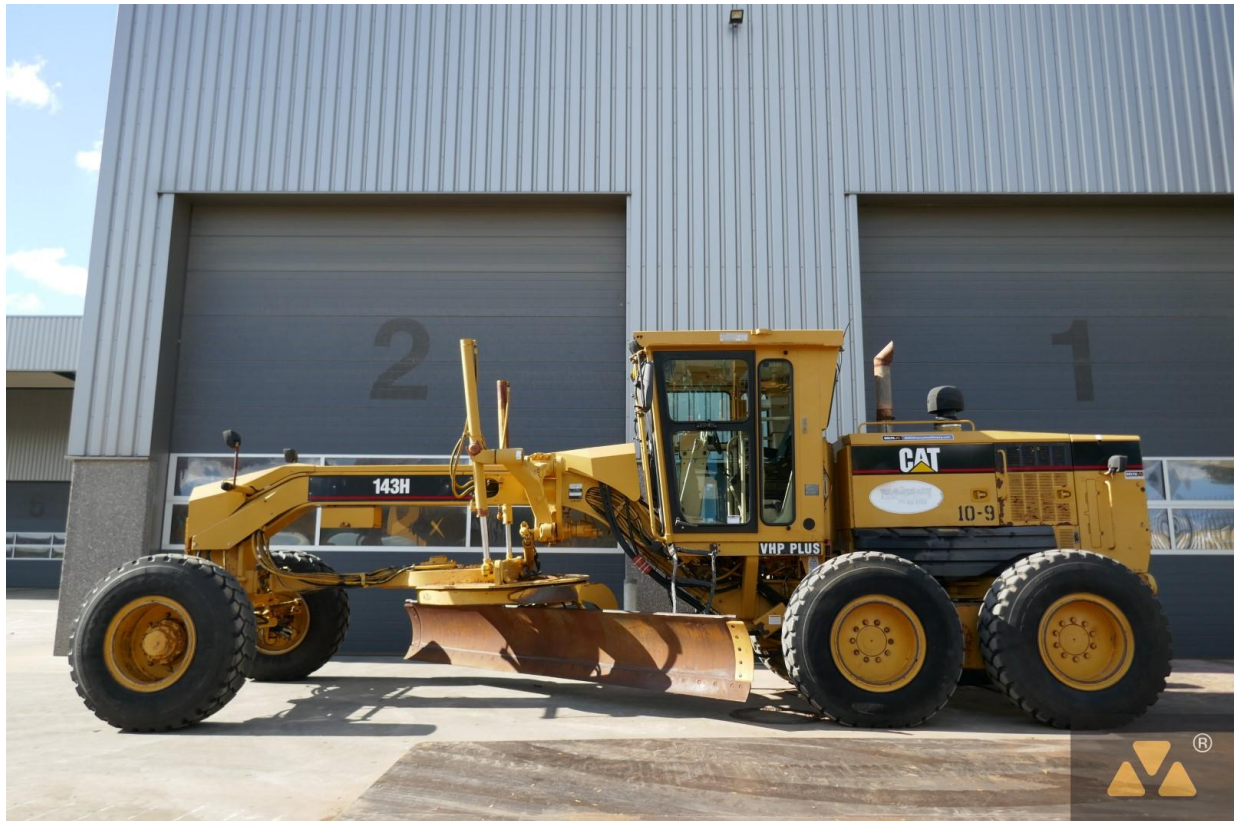


|                     |                               |                      |
|---------------------|-------------------------------|----------------------|
| Ref No. : E05575    | Sold new : 2004               | Serial No. : 480     |
| Brand : Caterpillar | Hour meter reading : 15232.00 | Weight : 15270.00 kg |
| Model : 143H        | Tyres/UC : 70 %               |                      |

Caterpillar 143H Motor Grader, AWD/6x6 Configuration, Low profile E-rops cab with air conditioning, 6 cylinder turbocharged Caterpillar 3176C ATAAC VHP Plus engine with 205HP (153kW), 8F-6R powershift transmission, 14ft (4.26 Mtr) moldboard, centershift, hydr. tip control, differential unlock, 17.5R25 tyres on average 70% remaining, extra aux. hydr. valves, front and rear work lights, 15,270 Kg operating weight. Machine comes straight out of work and is in ex-jobsite condition. Inspections are welcome.



Delta Machinery  
 Voltstraat 19  
 5753 RL Deurne  
 The Netherlands

Tel. +31 888 966 966  
 sales@deltamachinery.nl  
 www.deltaheavymachinery.com

KvK/CoC 17078066  
 BTW/VAT/TVA/UST NL802430685B01